

ORDER REFERENCE

PROJECT: XX

GENERAL CONTRACTOR: -

EQUIPMENT INSTALLED BY: XX

SPECIFICATIONS

MODEL: "HYDRAULIC" DRIVE- 200

LANDINGS: 3

CODE(S): 4

CAPACITY: 750#

SPEED: AT 36 F.P.M.±4

SUSPENSION MEANS: 2 WIRE ROPES 11,700 LBS. TRACTION
STL. STEEL 3/8" x 8 x 19 IWRC

CAR CONSTRUCTION: 3/4" HARDWOOD VENEER

NOTE: ALL MANUFACTURER SUPPLIED CAR AND EQUIPMENT OPTIONS ARE NOTED ON THE CONFIRMING ORDER SHEET.

DISCLAIMER: ONCE DRAWINGS HAVE BEEN APPROVED, SIGNED AND WITHIN 5 DAYS OF PRODUCTION, THE CUSTOMER WILL BEAR ALL RESPONSIBILITY AND LIABILITY OF FINISHED UNIT.

PLEASE REFER ANY QUESTION TO YOUR SALES REPRESENTATIVE

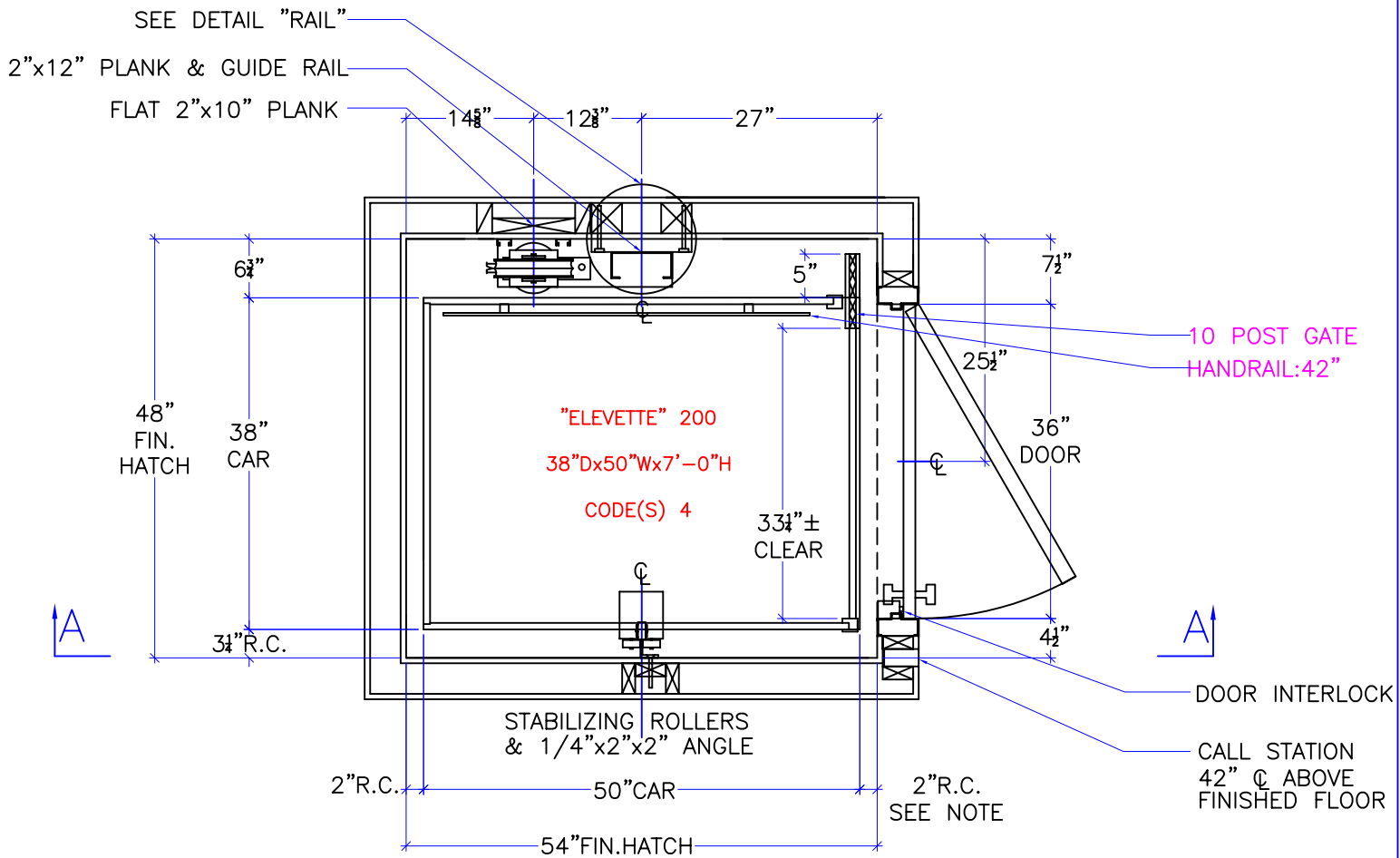
APPROVED

UNAPPROVED

SIGNATURE

DATE

DWG VIEW COVER SHEET		PART NUMBER 80205324			REV. DATE -	
DRAWING TITLE HIH-750#		DRAWING NO. -			-	
PAGE: 1/5	DRAWN BY: D.LUCASSEN	DWG. DATE 01/04/07	JOB OR APP.#	DEALER P.O.# -	DWG. SCALE 1:24	REV. LEVEL(1-3) -



NOTE:
 2" RUNNING CLEARANCE
 MUST BE REDUCED TO
 1/2" MIN./1 1/2" MAX.
 AT THE LANDING LEVELS.

NOTE:
 ALL HOISTWAY CONSTRUCTION MUST COMPLY WITH NATIONAL, STATE,
 AND LOCAL
 CODES. HOISTWAY MUST BE PLUMB AND STRAIGHT FROM TOP TO
 BOTTOM WITH NO PROJECTIONS INTO THE HOISTWAY.

NOTE:
 G.C. TO BUILD OUT HOISTWAY
 AS NEEDED TO MAINTAIN 3"
 REQUIRED FOR STABILIZER.

NOTICE TO ELECTRICAL CONTRACTOR:

- ALL ELECTRICAL WIRING MUST BE DONE BY A JOURNEYMAN MECHANIC AND MUST MEET ALL NATIONAL, STATE, AND LOCAL CODES.
- BRING (3) #10 W/GND FROM RESIDENCE INCOMING POWER PANEL 30AMP BREAKER(240V, NEUTRAL, GROUND)TO THE MACHINE ROOM.
- BRING (2) #12 W/GND FROM RESIDENCE INCOMING POWER PANEL 20AMP GFI BREAKER(120V, NEUTRAL, GROUND)TO THE MACHINE ROOM.
- REQUIRED LOW VOTAGE WIRING IS SUPPLIED BY MANUFACTURER. ALL EXTENSIONS ADDITIONS, ETC. SHALL BE DONE WITH THE SAME SIZE AND TYPE OF WIRE AS ORIGINALLY SUPPLIED BY THE MANUFACTURER.
- A TELEPHONE LINE SHALL BE SUPPLIED TO THE MACHINE ROOM AND SHALL BE CONNECTED TO A 24 HOUR CENTRAL EXCHANGE.
- ALL MEANS FOR ACCESS TO EQUIPMENT SHALL BE PROVIDED WITH A LOCK. ALL SHAFT DOORS MUST BE INTERLOCKED.

DWG VIEW

HOISTWAY LAYOUT

PART NUMBER

80205324

REV.DATE

-

-

-



DRAWING TITLE

HIH-750#

DRAWING NO.

-

PAGE:
2/5

DRAWN BY:
D.LUCASSEN

DWG. DATE
01/04/07

JOB OR APP.#

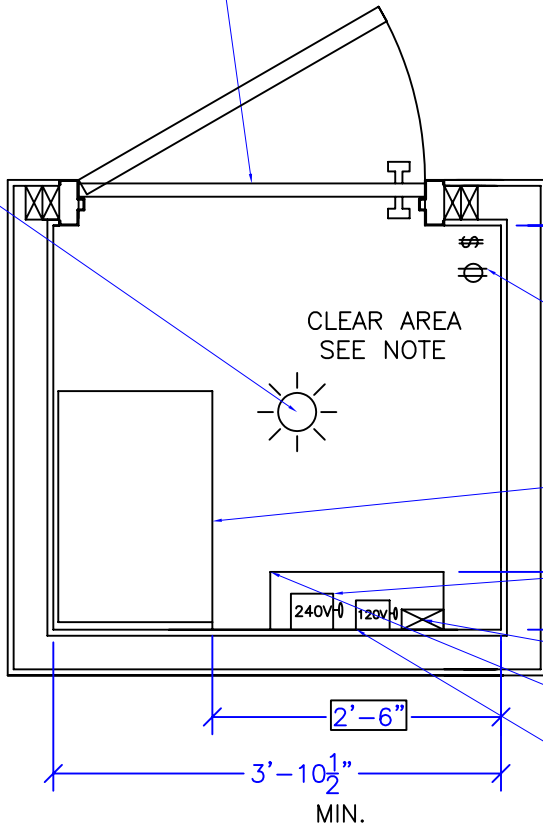
DEALER P.O.#

DWG. SCALE
1:24

REV.LEVEL(1-3)
-

MACHINE ROOM ACCESS DOOR,
LATCH AND LOCK FIELD LOCATE

MACHINE ROOM
LIGHT



- 120v. 20 AMP SERVICE
OUTLET w. G.F.I. BY OTHERS
- FIELD LOCATE HYDRAULIC
PUMP (16"Wx24"Dx33 1/2"H)
- 240v. FEEDER LINE: BY G.C.
DISCONNECT SWITCH:BY
ELEVATOR CONTRACTOR
- PHONE SERVICE BY OTHERS
- LANDING CONTROLLER
(18"Wx6 1/2"Dx24"H) FIELD
LOCATE TO MEET N.E.C.
AND/OR LOCAL CODES
- 120v. LIGHT
DISCONNECT SWITCH

NOTE:
MACHINE ROOM LAYOUT MUST
COMPLY WITH LOCAL, STATE,
AND NATIONAL CODES. REVISE
AS NECESSARY FOR COMPLIANCE
IN YOUR AREA.

NOTE:
MACHINE ROOM TO HAVE NATURAL/
MECHANICAL VENTILATION IF REQUIRED
BY STATES OR LOCAL CODES.

NOTE:
FLOOR TO CEILING
HEIGHT OF 6' 6" AND
□ MEASUREMENTS
REQUIRED BY N.E.C.

DWG VIEW
TYPICAL MACHINE ROOM(MIN.RECOMMENDED SIZE)

PART NUMBER
80205324

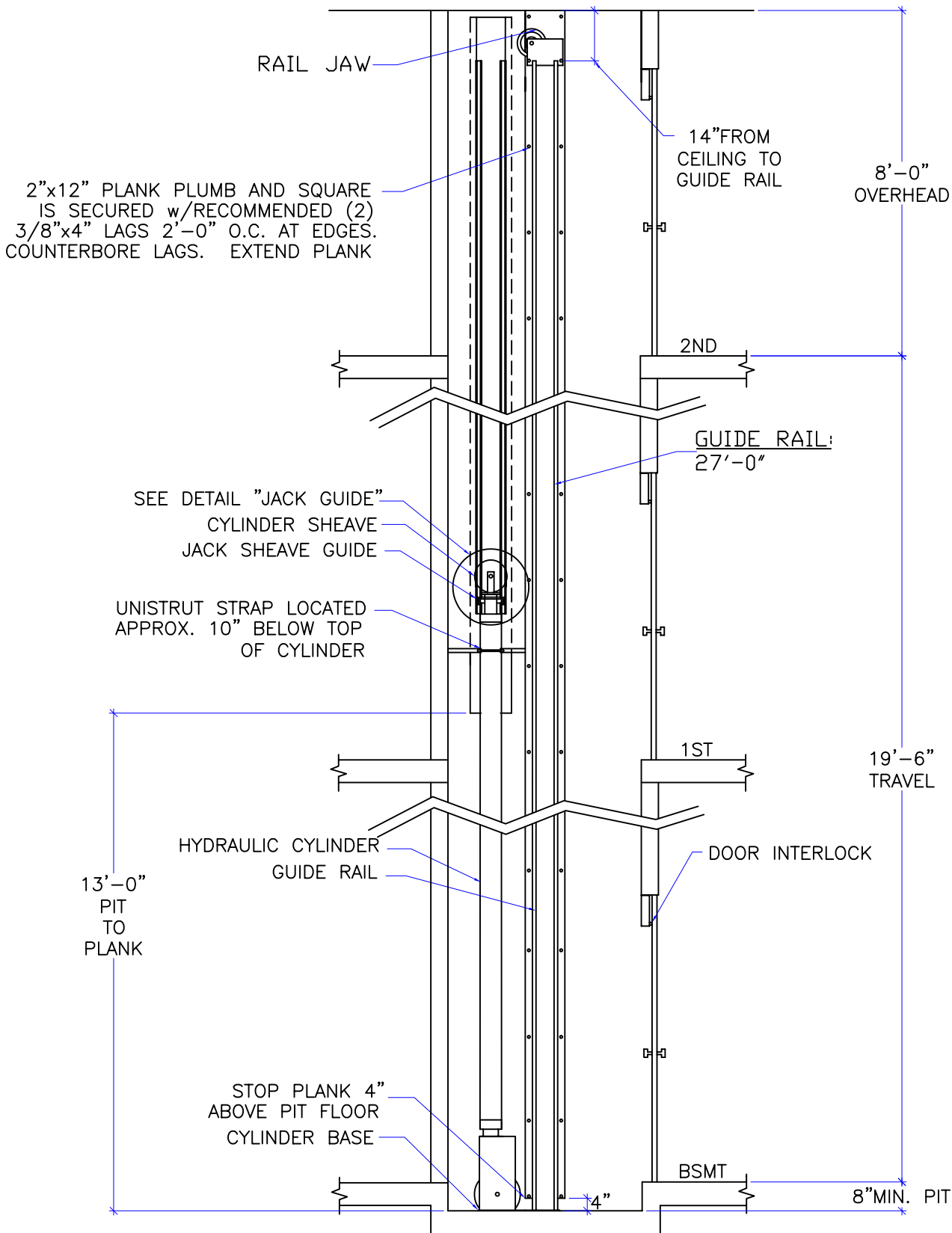
REV.DATE

DRAWING TITLE
HIH-750#

DRAWING NO.

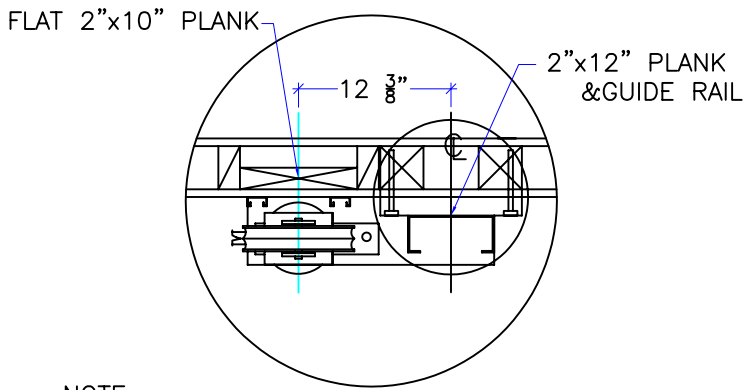
INCLINATOR
COMPANY OF AMERICA
HARRISBURG, PA

PAGE: 3/5	DRAWN BY: D.LUCASSEN	DWG. DATE 01/04/07	JOB OR APP.#	DEALER P.O.#	DWG. SCALE 1:24	REV.LEVEL(1-3)
--------------	-------------------------	-----------------------	--------------	--------------	--------------------	----------------



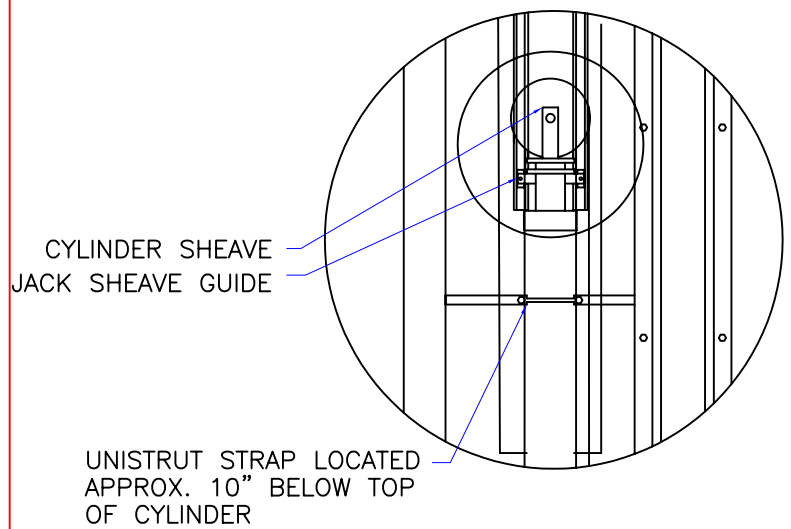
DWG VIEW		PART NUMBER		REV. DATE		
SECTION A-A		80205324		-		
DRAWING TITLE		DRAWING NO.		-		
HIH-750#		-		-		
PAGE:	DRAWN BY:	DWG. DATE	JOB OR APP.#	DEALER P.O.#	DWG. SCALE	REV. LEVEL(1-3)
4/5	D.LUCASSEN	01/04/07		-	1:24	-





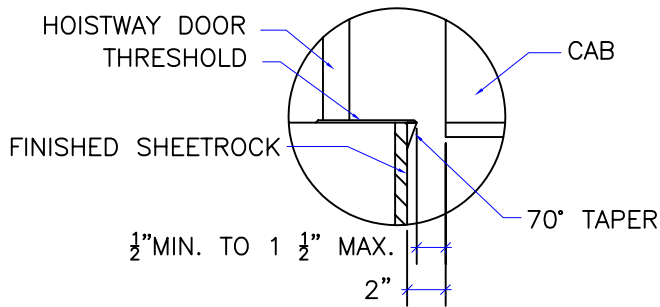
NOTE:
 WHEN STUD AND SHEETROCK CONSTRUCTION IS USED ON THE GUIDE RAIL SUPPORT WALL 4"x4" STUDDING IS NEEDED BEHIND THE 2"x12" PLANK.

RAIL DETAIL



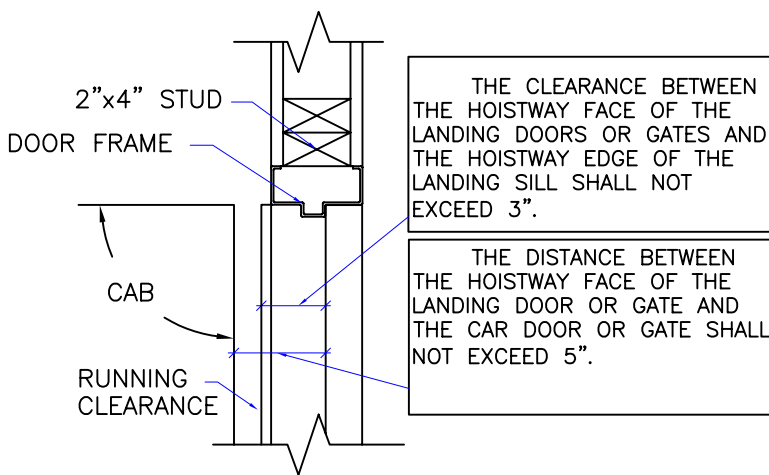
NOTE:
 JACK SHEAVE GUIDE MUST BE INSTALLED PARALLEL TO MAIN GUIDE RAIL, PLUMB w/ JACK ON INSTALLATION. UNISTRUT TO BE FASTENED TO THE SUPPORT PLANK EVERY 3'-0".

JACK GUIDE DETAIL



DOOR SILLS TO BE INSTALLED BY G.C. AFTER LIFT SUPPLIER HAS INSTALLED A RUNNING PLATFORM. SILL TO BE BROUGHT OUT TO NOT LESS THAN 1/2" AND NOT MORE THAN 1 1/2" TO THE RUNNING PLATFORM.

SILL DETAIL



DOOR FRAME DETAIL

1. VERTICAL LOAD FORCES
 STATIC = 2,100 LBS.
 IMPACT = 4,200 LBS.
2. RAIL FASTENING TO 2"x12" PLANK
 #14 x 1 3/4" TYPE A S.M.S. RAIL IS PRE-DRILLED AT FACTORY.
3. BOLT FASTENING OF CAR TO TROLLEY
 1/2" - 13 x 4" SOCKET HD CAP SCREWS
4. JACK SPECIFICATIONS
 - A. SINGLE PC JACKS
 PISTON DIA. 2 5/16"
 WALL THICK. 11/32"
 - B. SPLICED JACKS
 PISTON DIA. 2 13/16"
 WALL THICK. 9/32"
 - C. ALL CYLINDERS
 OUTSIDE DIA. 4"
 WALL THICK. 3/16"
 - D. MAX WORKING PRESS. 1000 PSI
5. ALL SHEAVE DIA. 8 5/16"

TECHNICAL DATA

DWG VIEW DETAILS, DATA, CODES		PART NUMBER 80205324		REV. DATE -	
DRAWING TITLE HIH-750#		DRAWING NO. -		-	
PAGE: 5/5	DRAWN BY: D.LUCASSEN	DWG. DATE 01/04/07	JOB OR APP.# -	DEALER P.O.# -	DWG. SCALE 1:24
					REV. LEVEL(1-3) -

